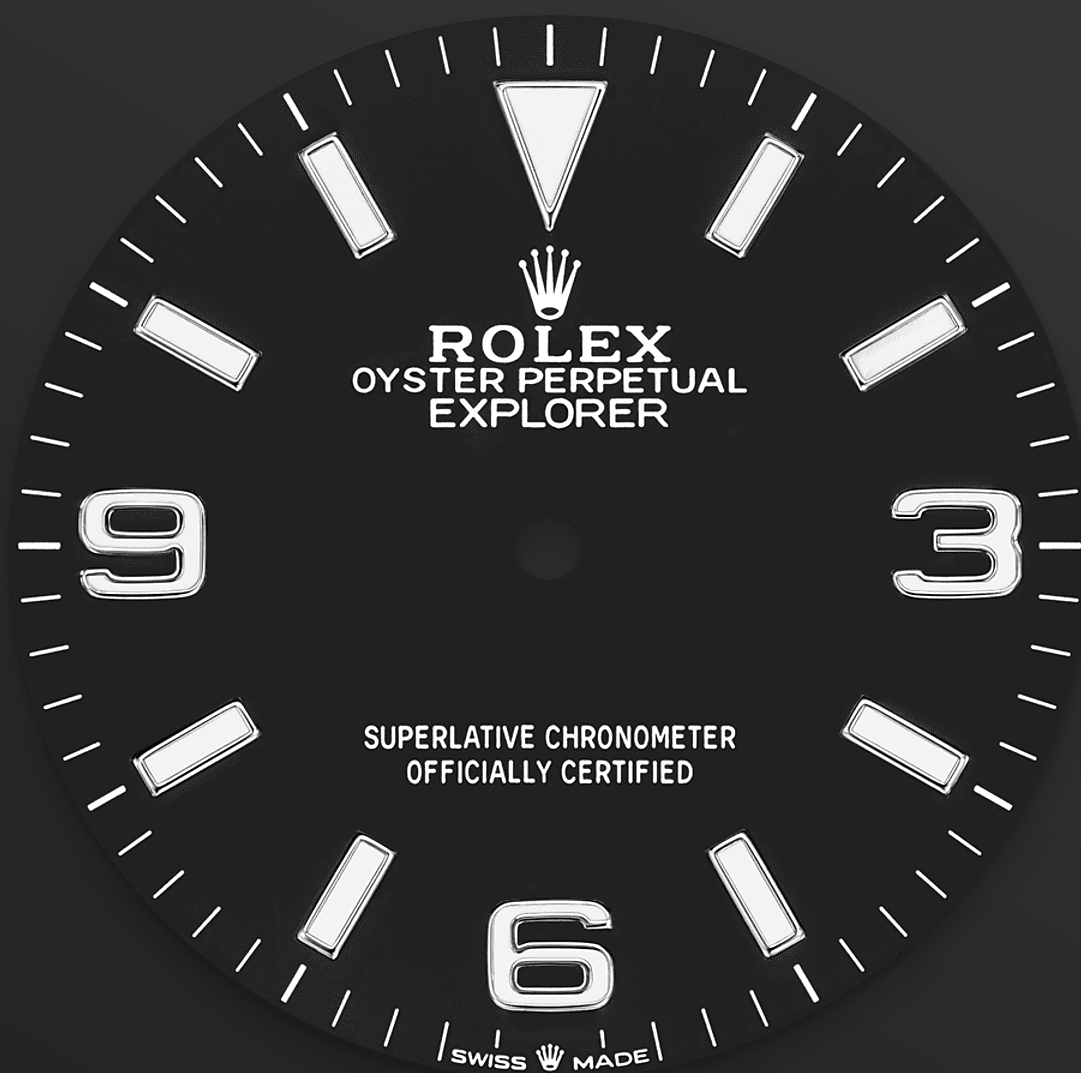




# Explorer 36

Oyster, 36 mm, Oystersteel

**The Oyster Perpetual Explorer 36 in Oystersteel features a distinctive black dial with characteristic 3, 6, and 9 numerals with a Chromalight display.**



BLACK DIAL

## Optimal legibility in any situation

The dial is the distinctive face of a Rolex watch, the feature most responsible for its identity and readability. The Explorer model's characteristic 3, 6 and 9 numerals are filled with a luminescent material emitting a long-lasting blue glow, like the hour markers and hands.

Like all Rolex timepieces, the Explorer 36's dial is designed and manufactured in-house, largely by hand to ensure perfection.



SMOOTH BEZEL

## **An established icon**

The Oyster Perpetual Explorer 36 imparts a fresh elan to the sober, clean lines that have long established it as an icon.

The smooth bezel in Oystersteel is robust yet elegant, and in perfect harmony with the Explorer's iconic heritage.



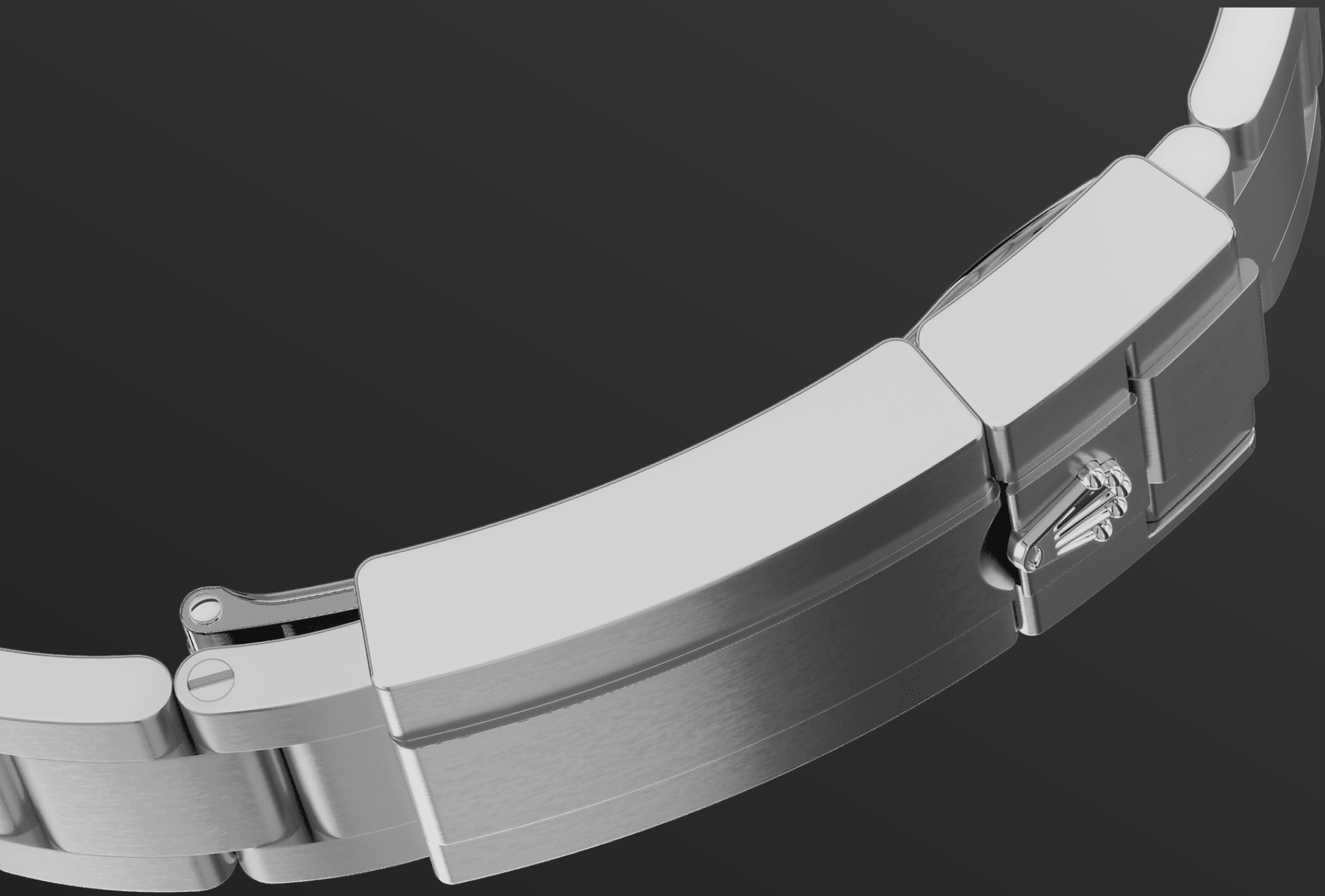
OYSTERSTEEL

## Highly resistant to corrosion

Rolex uses Oystersteel for its steel watch cases. Specially developed by the brand, Oystersteel belongs to the 904L steel family, alloys most commonly used in high-technology and in the aerospace and chemical industries, where maximum resistance to corrosion is essential.

Oystersteel is extremely resistant, offers an exceptional finish once polished and maintains its beauty even in the harshest environments.





THE OYSTER BRACELET

## Alchemy of form and function

The Oyster bracelet is a perfect alchemy of form and function, aesthetics and technology, designed to be both robust and comfortable. It is equipped with an Oysterlock folding clasp, which prevents accidental opening and the Easylink comfort extension link, also exclusive to Rolex.

This ingenious system allows the wearer to increase the bracelet length by approximately 5

mm, providing additional comfort in any circumstance.

# More Explorer technical details

Reference 124270

## Model Case

---

### Type

Oyster, 36 mm, Oystersteel

### Diameter

36 mm

### Material

Oystersteel

### Bezel

Smooth

### Oyster Architecture

Monobloc middle case, screw-down case back and winding crown

### Winding Crown

Screw-down, Twinlock double waterproofness system

### Crystal

Scratch-resistant sapphire

### Water Resistance

Waterproof to 100 metres / 330 feet

## Movement

---

### Type

Perpetual, mechanical, self-winding

### Calibre

3230, Manufacture Rolex

### Precision

-2/+2 sec/day, after casing

### Oscillator

Paramagnetic blue Parachrom hairspring. High-performance Paraflex shock absorbers

### Winding

Bidirectional self-winding via Perpetual rotor



**Power reserve**

Approximately 70 hours

**Functions**

Centre hour, minute and seconds hands. Stop-seconds for precise time setting

## Bracelet

---

**Type**

Oyster, three-piece solid links

**Bracelet Material**

Oystersteel

**Clasp**

Folding Oysterlock safety clasp with Easylink 5 mm comfort extension link

## Dial

---

**Type**

Black

**Details**

Highly legible Chromalight display with long-lasting blue luminescence

## Certification

---

**Type**

Superlative Chronometer (COSC + Rolex certification after casing)

# Explore and discover more on Rolex.com

**All intellectual property rights such as trademarks, service marks, trade names, designs and copyrights are reserved.**

Nothing contained in this website may be reproduced without written permission. Rolex reserves the right at all times to modify the models featured in the present website.

